



Value for Money

**High
Performance
High
Efficiency**

THE ULTIMATE
HP BREAKING
SOLUTION

**Gas Hydraulic
Rock Breaker**

**BETA 81
BETA 82**

WITH ADVANCED FEATURE





Nakoda is one of the leading manufacturer & OEM's supplier for various type of rock breakers in Indian market. Looking to huge market requirement in small size breakers, we have introduce a new heavy duty beta series breakers in market in the 5 ~ 10 ton class backhoe loader & same class of excavators. This breakers are hybrid type, top mounting, silent enclosed housing with a great productivity & best in this class. This breaker comes in to different models with highest tool diameter available in this class.

Features & benefits - Heavy duty box type deign Highest returns on investment

Consistence performance on every blow lowest running cost in this class easy to repair & maintain rock breakers supplied with PAN India warranty

BETA SERIES ROCK BREAKERS INTERNAL

1 Energy Regeneration Nitrogen Gas Cushion Chamber (ERNGCC)

Absorbs the piston's upward recoil and conduct energy recycling for the constant blow.

2 Easy-Pass Valve

Side mounted type of 'Easy-Pass Valve (EPV)' as a spool to regulate smooth oil traffic and to control the oil direction for the stable operation and the vibration absorbing.

3 Piston

Most efficient design for maximum energy transfer and recoil reduction as well as ideal match of tool and piston diameters. It transfers highest shock wave into the breaking objects.

4 Efficient Power Transfer(Piston to tool)

Optimum transfer of blow energy into the material and the reduction of the recoil.

5 Underwater Application(UA)

Air line for underwater use.

6 Housing Bottom Plate

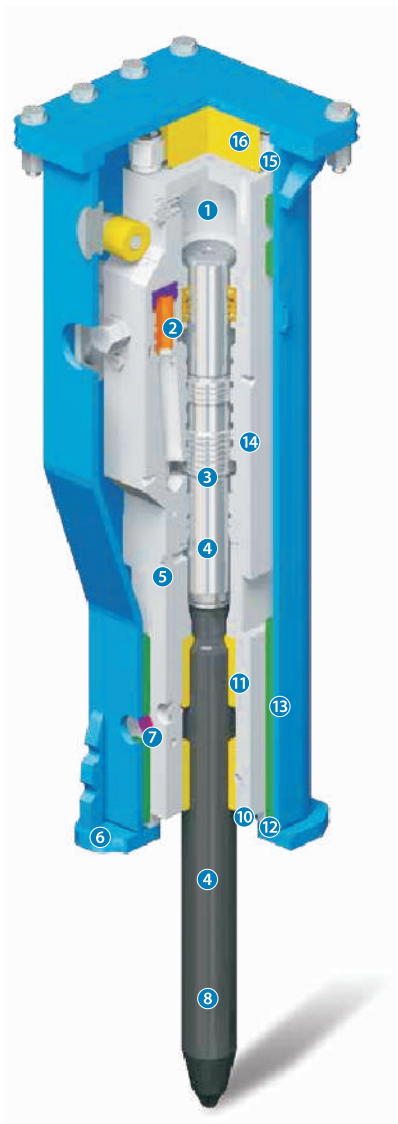
Abrasion-resistant plate delivers breaker protection.

7 Single Tool Retainer Pin

Correct tool alignment and dispersion of tool wear.

8 Working Tool

Heat treated and optimal length for efficient breaking.



16 Top Buffer

Vibration absorber to prevent the impulses between the carrier and the breaker.

15 Side(Tie) Rods

Fully closed side (tie) rods enlarges the durability and the optimal load carrying capacity is designed.

14 Cylinder Design

Square typed cylinder design brings optimum match between back head and front head as well as improves stable operation to increase the product durability and to reduce the unnecessary damages such as scratches.

13 Wearing Plates

Employment of wear resistant plates between cylinder, front head and housing increases the overall product durability.

12 Base Buffer

Vibration absorber and suspension device to protect the powercell.

11 All-in-One Type of Upper Bushing and Thrust Ring Integration

Convenient one set and easier maintenance and serviceability without disassembly of powercell.

10 Replaceable Tool Bushing

Convenience for replacement and protect the front head (Not shown on the illustration)

9 Auto Grease Refiller

Compact auto grease refiller is equipped as an optional feature. Easy daily refill is serviced and continuous greasing is available as long as the breaker is operated. (Not shown on the illustration)

Note : some features may be adjusted due to the drawing updates by the manufacturer.

✓ **PP+**

Power Plus Design gives extra power resulting in High Productivity and Piston Life.

✓ **Vibro Plus**

High Quality Anti Dampening Recoil System to protect Carrier Machine.

✓ **Silence+**

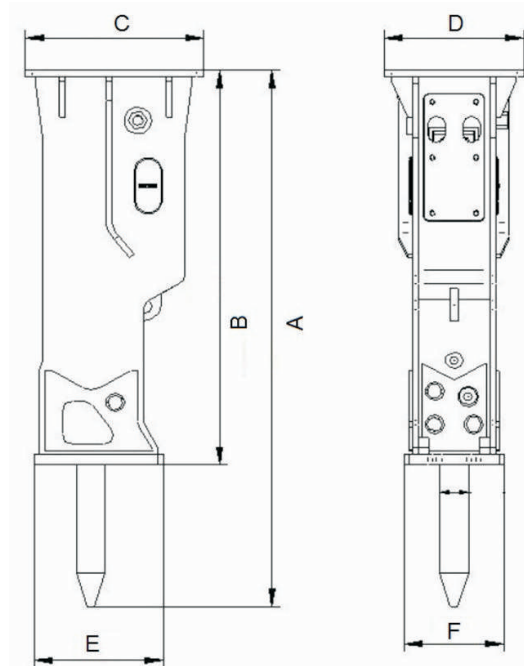
Breaker Housing equipped with Heavy Duty Polyurethane Pads which ensures Low Noise Level.

✓ **Heavy Duty Tool Pin Design**

The newly developed Heavy Duty Tool Pin results in higher life for Front Head and Tool.

✓ **Easy to Maintain & Repair**

✓ **Lowest maintenance cost in with class**



Technical Specification

PARTICULER	VALUES	Beta 81	Beta 82
Rock Breaker type	Hybrid, top mounting, closed box type silent plus housing		
Operating weight	Kg	407	570
Impact rate	bpm	350~1000	350 ~1000
Operating pressure	Kg/cm2	80~135	80 ~ 135
Relief pressure	Kg/cm2	150	160
Oil flow range	l/pm	40~80	40 ~ 80
Tool Diameter	mm	75	82
Pressure/return line	mm	12	18
Carrier weight	ton	5 ~ 8	6 ~ 10
Diamentions			
A	mm	1520	1594
B	mm	1219	1173
C	mm	401	510
D	mm	346	400
E	mm	315	370
F	mm	240	287

Specification are subject to change without prior notice.

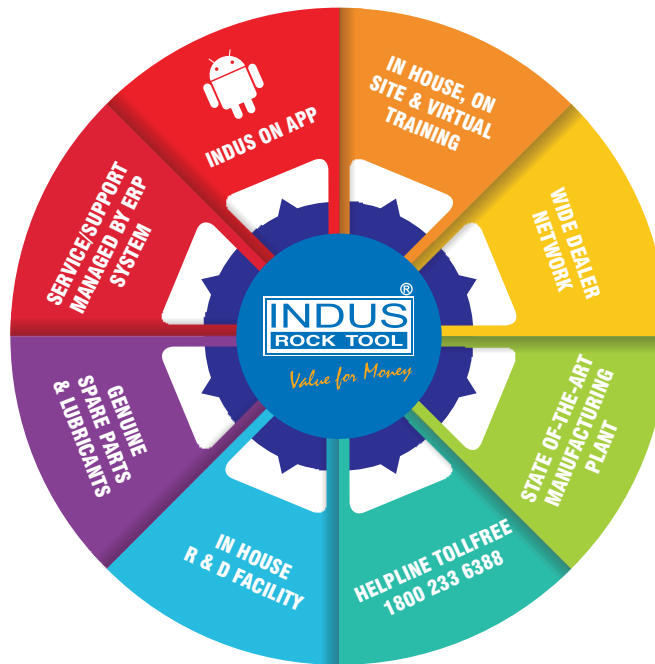
Sales And Support

Sales

Pan India Presence with own Branches, Dealers, Sales Executives and Engineers network to provide best sales support.

Spares

Pan India best Spare Parts support via Dealers, Channel Partners, own parts depot supported by 25000 sq.ft. central parts warehouse with huge parts inventory at Ahmednagar.



Service

100+ Service Engineers working across the country to support with Toll Free Helpline and INDUS app.

Training

Dedicated Team for time bound training on technical, Soft Skill, Developing Leaders for future, 360 degree feedback, Team building, Quality and outbound training etc.



NAKODA MACHINERY PVT. LTD.

Corporate Office : 139, 1st Floor, Patil Plaza,
Mitra Mandal Chowk, Pune 411009 (Maharashtra, INDIA)

+91 20 24449600, 41203772 ✉ sales@irt.co.in / info@irt.co.in

www.indusrocktool.co.in

@IndusRockTool in indus-rock-tool f Indusrocktool.official



Helpline : 1800 233 6388

Authorised Dealer